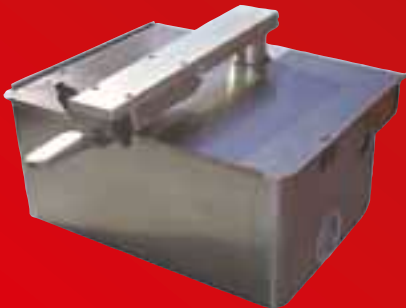
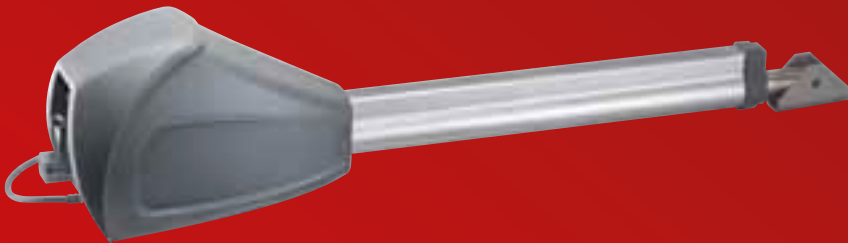


# The world of **SOMMER** swing & sliding gate operators



[www.sommer.eu](http://www.sommer.eu)



# The SOMMER swing and sliding gate o

## More convenience

Just push the button and the gates will open from the comfort of your car.

With contemporary style, swing and sliding gate operators from SOMMER are affordable luxury and can be quickly installed. At the push of a button **your gate opens or closes completely automatically** with safety and security built in.

## Highest safety

Safety and accident prevention are taken seriously at SOMMER. Our operators are equipped with reliable and proven technology you can depend on.

- ▶ The **automatic obstruction detection** ensures optimum protection particularly for families with children.
- ▶ The self-locking motor ensures effective **protection against break-ins or entry by strangers**. No additional locking mechanism is necessary for the SOMMER swing and sliding gate operators.
- ▶ The **unique SOMMER emergency release system** means the gate can be opened (unlocked) and locked manually in any position. Only with SOMMER is your gate locked (closed) during a power failure as well. This offers you optimal safety in any situation.



## Unique technology

- ▶ In developing the operators SOMMER attached importance to **reliable and durable products**.
- ▶ Our swing and sliding gate operators **can be easily and quickly installed**. **The control unit is also easy and simple to program**.
- ▶ The SOMMER swing gate operator 200 E/EL and twist XL can be installed on either left or right handed gates (non handed).

# Our swing gate operators

## twist 200 E – the high-capacity swing gate operator.

### Your benefits:

- ▶ suitable for swing gates up to 2.5 m width per leaf and 200 kg weight per leaf
- ▶ 1- and 2-leaf operations possible, either left or right handed gates (non handed)
- ▶ service friendly control board with numerous settings
- ▶ virtually maintenance free operator with a long service life



### Further advantages of twist 200 E/EL:

- ▶ very quiet, smooth movement
- ▶ no gate limit stops are required
- ▶ also suitable for gates which open to the outside
- ▶ safety facilities, e.g. warning light, light barrier (photo cell) or safety edges are suitable
- ▶ diverse setting options: pedestrian gate function, automatic closing, adjustable warning time, adjustable functions when an obstacle arises (complete or partial opening of the gate)

*Note: You get even more setting options by using twist 200 E/EL operator with twist XL or twist XXL control unit.*



# We are always certain to have the ideal solution.

The **SOMMER** company together with their subsidiaries and partners worldwide offer you everything from one source. Our products stand for highest quality and innovative technology – **SOMMER** "Made in Germany".

*Garage door operators*

*Roller shutter operators*

*Parking and blocking systems*

*Swing gate operators*

*Awning operators*

*Aluminium front doors*

*Sliding gate operators*

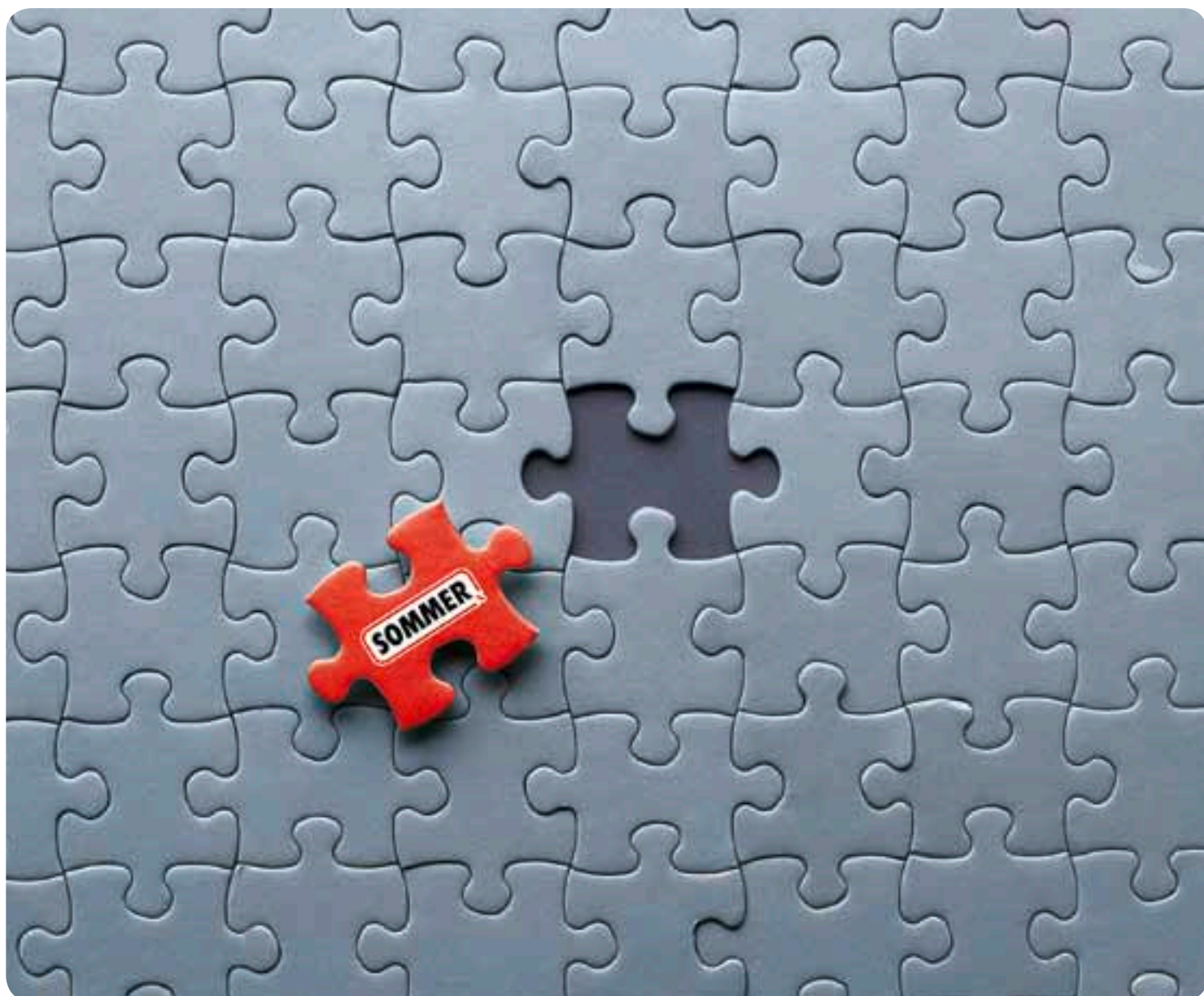
*Integrated operator systems*

*Home Automation*

*Industrial door operators*

*Roller door control unit*

*Radio control systems*



Visit our homepage: [www.sommer.eu](http://www.sommer.eu)

SOMMER Antriebs- und Funktechnik GmbH  
Hans-Boeckler-Str. 21 - 27  
D-73230 Kirchheim/Teck

phone: +49 (0) 70 21 / 80 01-0

fax: +49 (0) 70 21 / 80 01-101

e-mail: [info@sommer.eu](mailto:info@sommer.eu)

Your SOMMER dealer: